

062633

RECEIVED
LARAMIE COUNTY
CHEYENNE, WY.

Northwest corner Section 5 T17N R62W

CERTIFIED LAND CORNER RECORDATION '89 OCT 5 PM 3 01

DESCRIPTION OF CORNER EVIDENCE FOUND, AND ORIGINAL RECORD (If known)

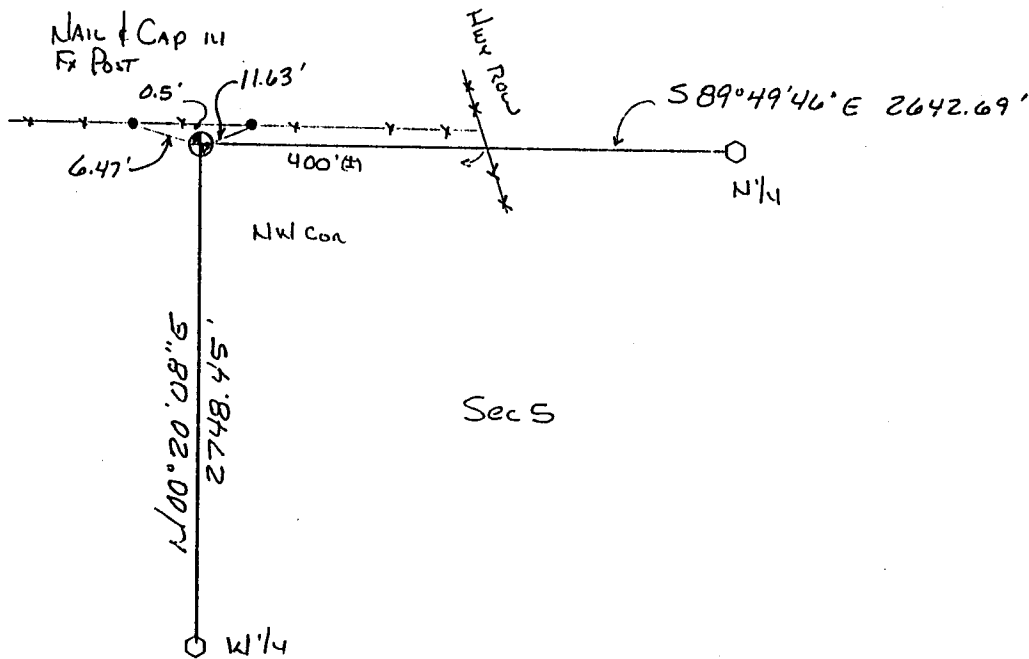
Found no evidence of the original corner or any resurvey. The GLO record was a 18x10x4 Limestone. The corner was tied on the Highway No. 85 ROW plans. We located existing ROW monomentation and reset the corner from these ties. Called the corner obliterated.

DESCRIPTION OF MONUMENT AND ACCESSORIES ESTABLISHED TO PERPETUATE THE ORIGINAL LOCATION OF THIS CORNER:

Set a 30" long No. 5 rebar with a Corps of Engineers Brass Cap at the location calculated from the ROW plans. Tie to an existing fence as shown below.

Aug 23 1989

SKETCH, WITH COURSE AND DISTANCE TO ADJACENT CORNER IF DETERMINED IN THIS SURVEY. (May Sketch or Paste Reproduction on Reverse Side.)



NTS
SOLAR BEIGN



I, Wallace C. Muscott certify that I have carefully performed or reviewed the work done on the diagrammed corner as reported on this recordation form and approve the same.

Wallace C. Muscott 3830
Signature of Surveyor Registration No.

STATE OF WYOMING,
Office of Clerk and Recorder,
County of _____

This "corner record" was filed for record on the _____ day of _____, 19____, was noted on the cross-index plat and is assigned page No. _____, in book No. _____.

| County Official | | | |
|-----------------|-----|----------|-----------------|
| Cross Index No. | A 5 | T. 17N | R. 62W 6th Mer. |
| | Z 5 | T. 18N | R. 62W 6th Mer. |
| | | T. _____ | R. _____ Mer. |
| | | T. _____ | R. _____ Mer. |
| | | T. _____ | R. _____ Mer. |
| | | T. _____ | R. _____ Mer. |
| | | T. _____ | R. _____ Mer. |